

# SPLASH PAINTS

## Company Profile



Try It Once.  
Trust It Forever.

2026 Edition



---

## TABLE OF CONTENTS:

---

### PROMINENT PAINTS

Who we Are 04

### CORPORATE VALUES

What we stand for 04

### VISION & MISSION

What we strive for 05

### FOOTPRINT

Where You Will Find Us 06

### GOING BEYOND COLOUR

Why we do more 07

### PRODUCT OVERVIEW

What is in the can 08

### OUR STRENGTHS

What you can count on 10

### OUR PROFESSIONAL PACT

What it means for you 13

### PROJECT PORTFOLIO

What we have been a part of 15

# Splash Paints Who we are



Our family of passionate **PAINT SPECIALISTS FOR PROFESSIONALS** comprises over 180 people ready and eager to support, inspire and impress you

**Our legacy** as a leading paint brand, founded in **2014**, with a track record of excellence translates into ongoing peace of mind for you

Our customers are our priority. When you choose the Splash paints quality, innovation, and professional services, you will experience first-hand how we go above and beyond for you.

## Corporate Values What we stand for

**Customer-centricity** | We prioritise the needs and satisfaction of our customers and strive to exceed expectations in terms of products and services.

**Trusted** | We uphold our commitments with unwavering ethics to ensure that all stakeholders can rely on us to deliver with honesty and dedication.

**High energy with agility** | We approach our work with vigour, speed and dedication. We embrace change, seize opportunities and respond effectively to challenges.

**Teamwork** | We value open communication and mutual support by, fostering a positive and collaborative work environment.

**Excellence** | We strive to deliver the best quality, provide invaluable product knowledge and maintain the highest safety standards.



# Vision & Mission

## What we strive for



---

### VISION

---

To cultivate lasting customer loyalty by consistently delivering long-term value to all stakeholders in a sustainable and ethical manner.



---

### MISSION

---

To provide high-quality products and services, aiming for a first. time-right approach that exceeds our customers' expectations. To work safely, act with integrity and foster pride among our employees and the communities we serve.

# Footprint

# Where you will find us



**Our footprint** begins at our head office and national warehouse along Kitui Road, Off Kampala Road, Off Enterprise road and extends all the way to our regional warehouses

**Our distributors** include over 300 stockists countrywide

**Our network** is ever-expanding thanks to robust alliances with trade contractors and painter

**Our partnerships** bring us ever-closer to you through strategic collaborations with leading retailers across East Africa



# Going Beyond Colour Why we do more



With so many options available to you, why choose us as your coatings partner?  
Here's why.

1. We go beyond colour to exceed your expectations by delivering inspired innovation, advanced technology, excellent quality and unmatched professional services, expertise, and support throughout your unique projects.
2. From initial site inspections to technical specifications, colour consultation, site evaluations, on-site training, steadfast support and technical and commercial expertise, we act as your trusted advisor in completing remarkable projects
3. Industry professionals and proud homeowners alike know and trust us as the pre-eminent name in paint quality, innovation, and professional services.

## For you we go above and beyond

#A colourful splash of life!



# Product Overview

## What is in the can



Available in a wide selection of attractive finishes and inspired colours, our Paints coatings are specifically formulated to provide long-term protection of our clients' assets.



### PLASTIC EMULSION

Is an economy grade emulsion that is formulated for use on cement, brick work plaster and concrete surfaces with great hiding

Weight: 20 Litres, 4 Litres, and 1 Litres



### SUPA MATT EMULSION

Ideal for ceilings and low traffic areas. With excellent hide and coverage. For interior walls and ceilings

Weight: 20 Litres, 4 Litres, and 1 Litres



### SUPERGLOSS

Is designed to provide maximum durability with a high gloss level and excellent gloss retention & Superior Quality, Multi- surface high gloss product Suitable for wood, metal, plaster, wallboards, brickwork and stone work.

Weight: 20 Litres, 4 Litres, and 1 Litres



### EXTRAGUARD EMULSION (WITH SILICONE)

A pure acrylic co-polymer exterior paint with outstanding decorative finish It is formulated to withstand extreme weather variations on exterior walls and buildings as got excellent opacity for durability

Weight: 20 Litres, 4 Litres, and 1 Litres



### VINYL MATT EMULSION

Splash vinyl Matt (emulsion is the classic finish for interior walls and ceilings. It's a water-based, environmentally friendly paint and dries to an incredible matt finish that exudes character, brings out the richness in colors, and provides high scrub resistance :With high Duality high scrub resistance, excellent coverage, and a beautiful flat finish

Weight: 20 Litres, 4 Litres, and 1 Litres

# Product Overview

## What is in the can



Available in a wide selection of attractive finishes and inspired colours, our Paints coatings are specifically formulated to provide long-term protection of our clients' assets.



### CLEAR VARNISH

Premium quality polyurethane-based wood varnish. Forms a very hard and tough film that is scratch and mark resistant. Provide a good moisture barrier film

**Weight: 20 Litres, 4 Litres and 1 Litres**

---



### SANDING SEALER

An outstanding quick drying high quality wood finish. It is water and dust resistant. Thinning should be done using splash thinner. Best applied by brush and spray machine

**Size: 1 Litres**

---



### MAHOGANY STAINS

A decorative premium wood finish that gives maximum protection against fungus, insects attacks and water soak in timber

**Size: 4 Litres, 1 Litres, and 0.5 Litres**

---



### ROOF PAINT

An alkyd-based paint which is formulated to endure and withstand extreme weather conditions. It's a high-quality coating power that helps in the protection of steel work and galvanized roofs. Has got excellent opacity with a semi-gloss and color retention. Available in a wide range of color shades.

**Weight: 4 Litres and 1 Litres**

---



### TURPENTINE

Contains powerful solvents break down oil-based paints, primers, and stains, making it easier to strip paint off of a surface or clean painting tools

**Weight: 5 Litres, 1 Litres**

---



### WHITE SPIRIT

Contains powerful solvents break down oil-based paints, primers, and stains, making it easier to strip paint off of a surface or clean painting tools

**Weight: 5 Litres, 1 Litres**

---

# Product Overview

# What is in the can



Available in a wide selection of attractive finishes and inspired colours, our Paints coatings are specifically formulated to provide long-term protection of our clients' assets.



## WALL TEXTURE

A water based exterior paint that is rough and gritty that gives an extraordinary decorative to exterior walls. Resistant to such as sun rays and abrasion with a high pattering feature. Available in a wide range of colors with different Gritts sizes

**Weight: 30 kg**

---





# Our Strengths

# What you can count on



Quality | Expertise | Sustainability | Colour Palette | Warranty

---

## QUALITY

---

Splash Paints' complete range of extensive product solutions for the trade and consumer market is manufactured to strict KEBS quality standards

Our low VOC products conform to the Greenstar Office v1 rating tool. Our High Performance, Premium and Select paint ranges are all backed by quality guarantees of 15-years, 12-years and 7-years, respectively. We provide large-project warranties for specific periods subject to correct specification conditions.

---

## EXPERTISE

---

**Preliminary Site Inspection** | Involves the on-site assessment of buildings, environment, location and drawings.

**Technical Specification** | Precise technical details and tailored specification documents.

**Product Advice** | Advice on preparation, application techniques and substrate assessment.

**Colour Advice** | Professional colour consultations for colour combinations, colours schemes, and A4 colour samples.

**Regular Site Evaluations** | If required, to track project process and compile site reports, including:

1. Surface preparation,
2. Systems used,
3. Moisture content,
4. Required wet and dry film thickness,
5. Deviations from paint specifications, and reasons.

**Final Site Inspection** | Involves all parties and our third-party independent assessor to produce a snag list for the contractor to address prior to sign-off.

---

## SUSTAINABILITY

---

As a member of the Green Building council of South Africa, Prominent Paints is committed to manufacturing and marketing paint products that adhere to international best practices and recognise and promote the drive towards environmental sustainability.

**All our products are:**

1. Environmentally friendly and lead-free.
2. Low in VOC at under 16g per litre.
3. APEO-free.

Our Ecological Solutions® philosophy reflects our drive to develop and use products that are kinder by design, kinder to the environment, and kinder to your health.

---

## COLOUR PALETTE

---

Any colour the eye can conjure, we can offer you. All products across our paint ranges are tintable to any colour in the NCS\* range, while some products also have a selection of pre-mixed off-the-shelf colour options.

\*NCS – Natural Colour System™ is a logical colour system designed around how the human eye sees and characterises six elementary colours, and the understandable international colour order system for:

1. Colour selection
2. Specification
3. Communication and control of colour
4. Design, architecture, research, marketing and manufacturing.





---

## PROFESSIONAL PROJECT WARRANTIES

---

Large-project warranties are given for specific periods, subject to correct specification conditions.

External third-party quality assurance companies used to conduct independent building audits.

Full third-party quality assurance certification available

Paint film warranty | Provided on selected products for specific periods, subject to the application of the product at the correct specifications.

Free quality assurance service | Available for trade projects of higher paint values, this service comprises site inspections by an independent third-party before and during the application process.

Frequent inspection reports | Available for warranted projects, frequent third-party inspection reports are offered to ensure peace of mind.

Paint film warranty certificate | Issued within 30 days of project completion.

# Our Professional Pact

## What it means for you

You can count on us as your dedicated partner to provide you with the best products, solid expertise and steadfast support throughout your project, from start to finish. Our professional pact offers you peace of mind with the following complimentary inclusions:



### PRELIMINARY SITE INSPECTION

As every project is unique, with its own challenges and opportunities, our specifiers will conduct an on-site assessment taking into account the drawings, buildings, environment and location.



### TECHNICAL SPECIFICATION DOCUMENT

By completing the Preliminary Site Inspection, we are able to pinpoint the optimal products, paint systems and colour choices to provide enduring protection and enhance aesthetic appeal. These technical details will be conveniently contained in your tailored specification document.



### PRODUCT ADVICE

Within your specification document, you will find guidance on product choices, preparation, application techniques and substrate assessments.



### COLOUR ADVICE

Professional colour consultations will aid you in making confident colour choices, while A4 colour samples will ensure accurate colour matches



### REGULAR SITE EVALUATIONS

To help you manage a quality outcome, you can be assured of our support every step of the way, and if needed, we can track project processes and workmanship and compile detailed site reports including:

1. surface preparation,
2. systems used,
3. moisture content,
4. required wet and dry film thickness,
5. deviations from paint specifications, and reasons,
6. problem solving recommendations.



---

## FINAL SITE INSPECTION

---

For your peace of mind and ours, this involves all parties and our third-party independent assessor to produce a snag list for the contractor to address prior to sign-off. With final sign-off, you'll receive the relevant quality assurances, paint film warranties, and product quality guarantees



---

## WARRANTIES AND ASSURANCES

---

Paint film warranty | Provided on selected products for specific periods, subject to the application of the product at the correct specifications.

Free quality assurance service | Available for trade projects of higher paint values, this service comprises site inspections by an independent third-party before and during the application process.

Frequent inspection reports | Available for warranted projects, frequent thirdparty inspection reports are offered to ensure peace of mind.



# Project Portfolio

# Transformations We're Proud Of

The power of our Prominent Paints Professional Pact is visible in the projects we've helped our clients and partners complete.

## COMMERCIAL | RESIDENTIAL | INDUSTRIAL | SPECIALIZED SERVICES

1. Abdirahman Liban (Winsor Service Station)-Kiambu
2. Abdisaid Apartment- 6th Street
3. Adahu Apartment-South C
4. Adan Hassan Apartment- South B
5. Addisson Apartments-Ushirika/Kilimani
6. Aden Height Apartments- 7th Street
7. Ahlam Height Apartments- Muratina Road
8. Ahmed Sadiq Apartments -Mombasa
9. Ahmed Sadiq Apartments- Nyali
10. Ahmed Yeriso Hotel-South C

21. Banju Towers
22. Bilan 2 Towers
23. Blue Best Investments-South C & Eastleigh
24. Blue Sky Petrol Station -Runda
25. Bogol Soon Primary Schools
26. Bunyan Residency Apartment
27. Burji Habib Towers
28. California 5 Apartment
29. California Height Apartment
30. California Palace Apartment

11. Al- Beit House Apartment- 4th Street
12. Al-Hash Real Estates
13. Amir Plaza
14. Annex Towers-Juja
15. Ansar Sunnah Apartment- 6th Street Eastleigh
16. Ansar Sunnah Schools
17. Anzel Plaza
18. Aviero Towers-South C
19. Azziziya Apartments-Bangal 3
20. Bangal Apartments

31. Chai Road Towers
32. City Brothers Apartment-South B
33. City Park View Apartment - Ushirika
34. City Star Estate -Parkroad
35. Crossroad 2 Apartment
36. Daus Apartment
37. Daldije Apartment- Juja B
38. Dariobro Kenya Limited
39. Daud Apartment- 8th Street
40. Don Bosco Sec School

# Project Portfolio

## Bringing Colour to Life

The power of our Prominent Paints Professional Pact is visible in the projects we've helped our clients and partners complete.

COMMERCIAL | RESIDENTIAL | INDUSTRIAL | SPECIALIZED SERVICES

### 41. Maestro Projects

1. Maestro Apartment-Parklands
2. Embassy Apartment-South C
3. Maestro Height -South C
4. Pine Tree Apartments-Parklands
5. Axiom Apartment

### 42. Emaar Apartment- Pangani

### 43. Esther Loree Apartments- GardenCity

### 44. Exeter Apartments-Lavington

### 45. Exiotic Plaza

### 55. Hansim Executive- 5th Street

### 56. Hussein Hassan -Section 3

### 57 Hyperland Projects

1. Hyperland 1
2. Hyperland 2
3. Hyperland 3
4. Hyperland 4
5. Hyperland 5
6. Hyperland 6
7. Hyperland 7
8. Hyperland 8
9. Hyperland Nyali - Mombasa

### 46. Farhan Apartment-8th Street

### 47. Farico Plaza

### 48. Fiqi Properties Ltd

### 49. Gambella Apartment- Ngara

### 50. Garissa Lodge

### 51. Garissa Mosque

### 52. Gawe Heights Apartments

### 53. Global Salat City Ltd- Section 1

### 54 Guled Kuno Projects

1. Gulled Kuno Apartment -Section 3
2. Gulled Kuno Apartment -Parklands

### 58. Ibgaro 4 & 5 Projects

### 59. Ibrahim Adde Projects

1. Ibrahim Adde- Eastleigh
2. Ibrahim Adde- Kilimani
3. Ibrahim Adde- Parklands

### 60. Igad Projects

### 61. Ismir Height Apartment- Parkroad Ngara

### 62. Isra Height Apartment -South C

### 63. Jabavu Residency Apartments- Kilimani

# Project Portfolio

## Precision in Every Coat

The power of our Prominent Paints Professional Pact is visible in the projects we've helped our clients and partners complete.

COMMERCIAL | RESIDENTIAL | INDUSTRIAL | SPECIALIZED SERVICES

- 64. Jeff Hamilton Apartment-Lavington
- 65. Karama Construction Ltd-Apartment
- 66. Kenston Apartment-South B Kapiti Road
- 67. Kenzi Residential Apartment-Westlands
- 68. Kitale Kmtc
- 69. Kwale Mosque
- 70. Mash Apartment- Pangani
- 71. Maro Properties Ltd-Apartment
- 72. Masra Apartment- Section 3
- 73. Mohamed Abdirahman -Kariobangi
- 74. Mohamed Al-Jazeera Apartment-South C

- 85. Nairobi East Hospital
- 86. Nairobi Towers Apartment
- 87. Hansim Apartment
- 88. Noor Shariff Apartment- Pangani
- 89. Noor Shillow -Rangers Apartment
- 90. Oman Electronic Shopping Mall-  
Luthuli Avenue
- 91. Pangani View Apartment
- 92. Philich Company-Apartments
- 93. Prime Prick Developers
- 94. Qaolin 2 Apartments

- 75. Mosque -11 Street Eastleigh
- 76. Mosque Masjid Abubakar -6th Street
- 77. Mosque -Westlands
- 78. Mr Ali Abdi Apartment- Pangani
- 79. Muhumed Hanshi Apartments
- 80. Muratina 1 & 2 Apartments
- 81. J & M Apartments
- 82. Muzdalifa Towers
- 83. Mzee Ali Apartments-11th Street  
& 12th Street
- 84. Naicom Properties Ltd

- 95. Rabat Apartments-Eastleigh
- 96. Ramadhan Apartments
- 97. Ramla 1 & 2 Towers
- 98. Relax Holdind Ltd-Kilimani
- 99. Relief Organization -Bihi Section 1
- 100. Rodol Homes Ltd
- 101. Rugsan 2 Apartments
- 102. Sabrin Tower -Donholm
- 103. Sagal 1 & 2 Apartments
- 104. Salam Apartments- Section 3
- 105. Samsung Plaza

# Project Portfolio

# Where Quality Meets Perfection

The power of our Prominent Paints Professional Pact is visible in the projects we've helped our clients and partners complete.

COMMERCIAL | RESIDENTIAL | INDUSTRIAL | SPECIALIZED SERVICES

- 106. Saz Trader Limited
- 107. Shell Service Station -Mavoko
- 108. Shufaa Apartment-8th Street
- 109. Southern Sahil- Raaz Apartment
- 110. Stima Investment Plaza
- 111. Supa 2 Apartment-Juja B
- 112. Taah Heights Apartment
- 113. Tamam Apartments
- 114. Taran Towers Apartment
- 115. Tayo Plaza
- 116. Ushirika Heights Apartments

- 123. Space Infrared Ltd (Massionate)-Karen
- 124. Abdirashid (Massionate)-Syokimau
- 125. Feisal Royal Park (Massionate)-Langata
- 126. Maryan Hassan (Massionate)-Syokimau
- 127. Samuel Mutahi (Massionate)-Kikuyu
- 128. Wilser Bilders (Massionate)-Karen
- 129. Shalom (Massionate) -Utawala

## ISMIR HEIGHTS

### 117. Wafi Investment Ltd Projects

- 1. Wafi Investment -Parklands
- 2. Wafi Investment -Kilimani
- 3. Wafi Investment- California

- 118. Westland Restaurant
- 119. Yussuf Apartment-Section 3
- 120. Zakaria Apartment-Muratina
- 121. Zamil Realtors Ltd-Projects
- 122. Zeitun Towers Apartments



# Project Portfolio

# Quality In Every Coat

The power of our Prominent Paints Professional Pact is visible in the projects we've helped our clients and partners complete.

COMMERCIAL | RESIDENTIAL | INDUSTRIAL | SPECIALIZED SERVICES

**RAYAN HEIGHTS  
EASTLEIGH**



**KHALIL APARTMENT  
PARKLANDS**



**SAGAL II  
PANAGANI**



**ANDALUS RESIDENCE  
PANGANI**



**NAIROBI TOWERS  
PANGANI**



**CROSS ROAD II  
EASTLEIGH**



**DARUL -SALAM RESIDENCE  
SOUTH C**



**ALILI APARTMENTS  
PANGANI**



**MOHAMED AL-JAZEERA  
APARTMENTS SOUTH C**



**RELAX APARTMENTS  
YAYA**



**JABAVU RESIDENCE  
KILIMANI**



**AROVA HOTEL  
SOUTH C**



**IDAHO RESIDENCE  
SOUTH C**



**J & M APARTMENTS  
PARKLANDS**



**SAGAL II  
PANGANI**



**ANDALAU RESIDENCE  
EASTLEIGH**



**BANGAL APARTMENT  
EASTLEIGH**



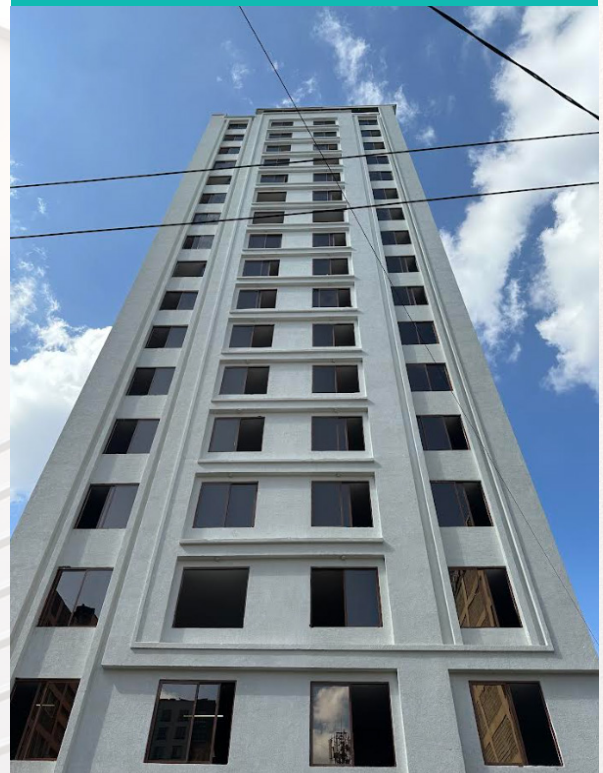
**12TH STREET  
EASTLEIGH**



**8TH STREET  
EASTLEIGH**



**QAOLIN 2 APARTMENT  
EASTLEIGH**



**USHIRIKA APARTMENT  
EASTLEIGH**



**TAMAM II APARTMENT  
EASTLEIGH**



**AHLAM APARTMENT  
EASTLEIGH**



**ZAKARIA APARTMENT  
EASTLEIGH**



## ADISON APARTMENT EASTLEIGH



## DONBOSCO SCHOOL EASTLEIGH



**TAAH HEIGHTS  
APARTMENTS SOUTH C**



**IBAGARO 4 APARTMENT  
EASTLEIGH**



**IBAGARO 5 APARTMENT  
EASTLEIGH**

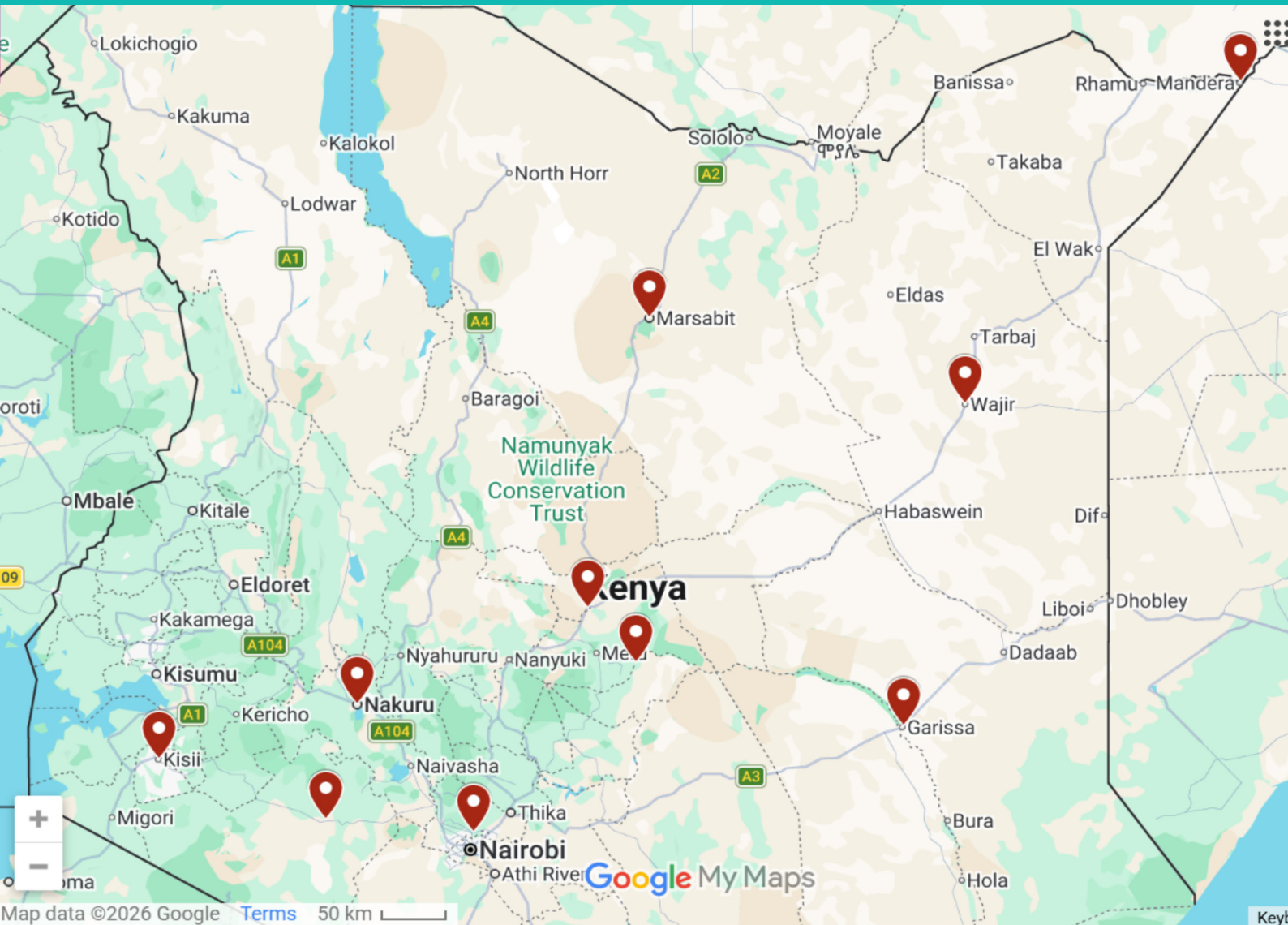


**CHAI ROAD APARTMENT**



# Splash Paints

# Our Regional Presence



1. Nairobi
2. Garissa
3. Wajir
4. Manderera
5. Marsabit

6. Narok
7. Nakuru
8. Kiambu
9. Kisii
10. Isiolo

# RAISING THE STANDARD IN EXTERIOR PAINT



fotor

At Splash Paints we are dedicated to delivering vibrant colours, durable finishes, and reliable solutions for every project. Thank you for choosing a brand that values quality, innovation and customer satisfaction



P.o Box 17703-00500, Nairobi  
Kitui Road, Off Kampala Road,  
off Enterprise Road

Phone : +254 719 444 333  
Email : [info@splashpaints.co.ke](mailto:info@splashpaints.co.ke)  
Website : [www.splashpaints.co.ke](http://www.splashpaints.co.ke)

